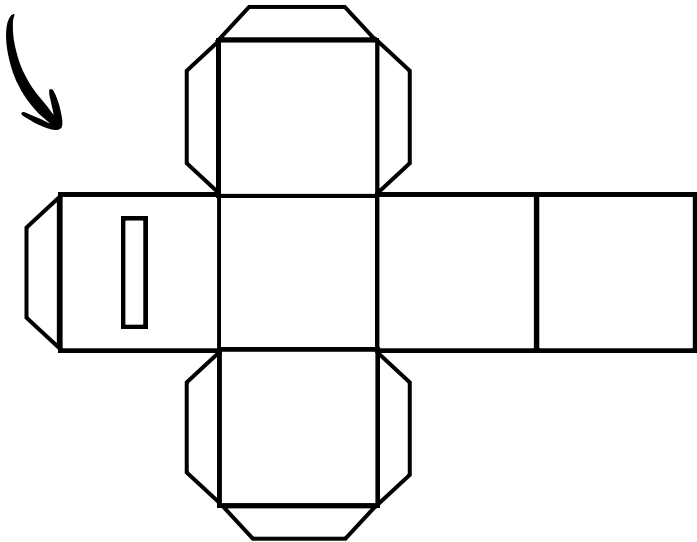


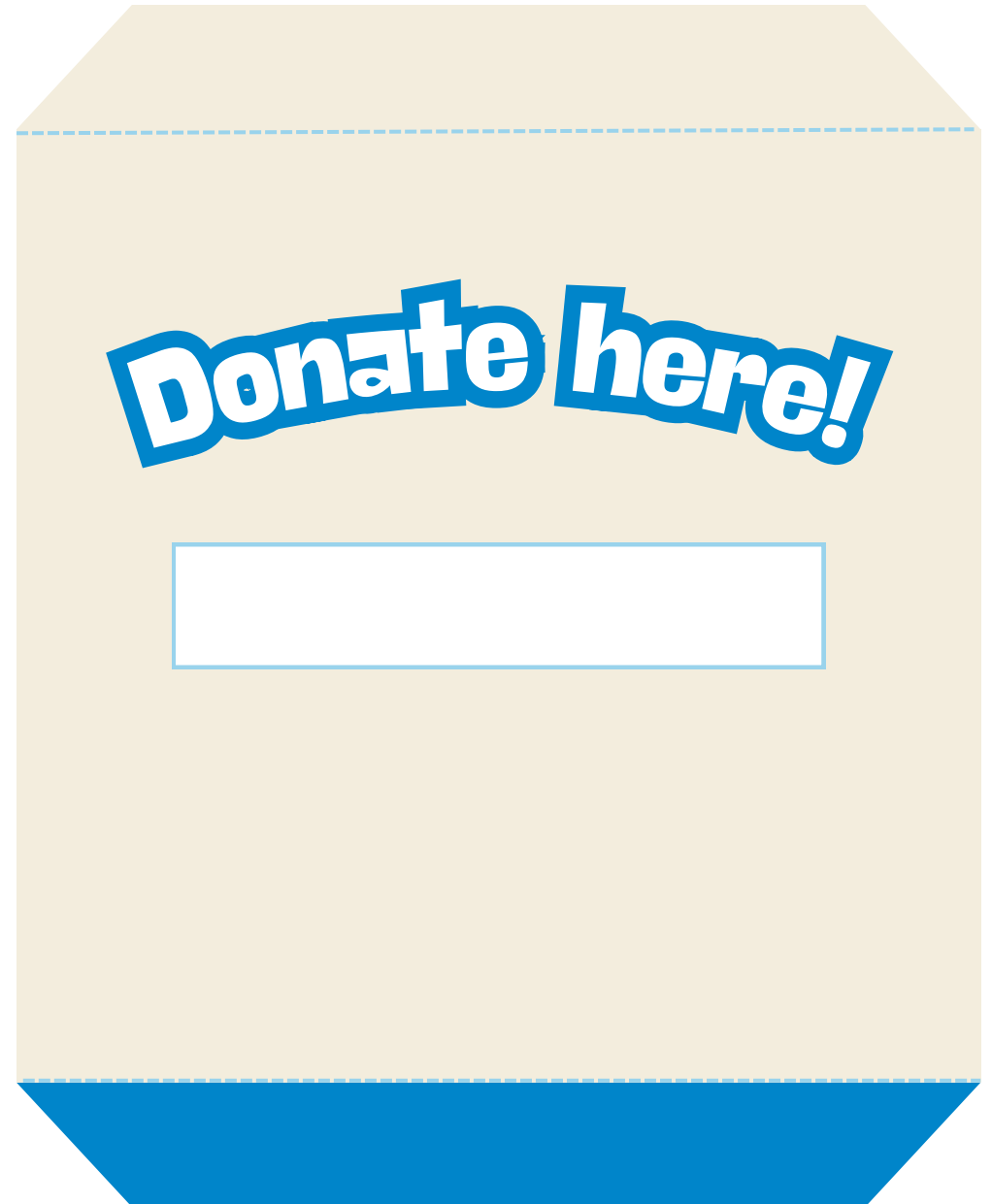
Coin box

Instructions

1. Print the 4-page template on light card
2. Cut out the template on the solid lines. (Don't forget to cut the coin slot!)
3. Fold on the dotted lines.
4. Fold on the dotted lines.
5. Glue together coloured flaps first to form the below shape.



6. Glue remaining flaps to form a cube.



RSPCA
South Australia

\$150
for **150**
years

RSPCA
South Australia

\$150
for **150**
years



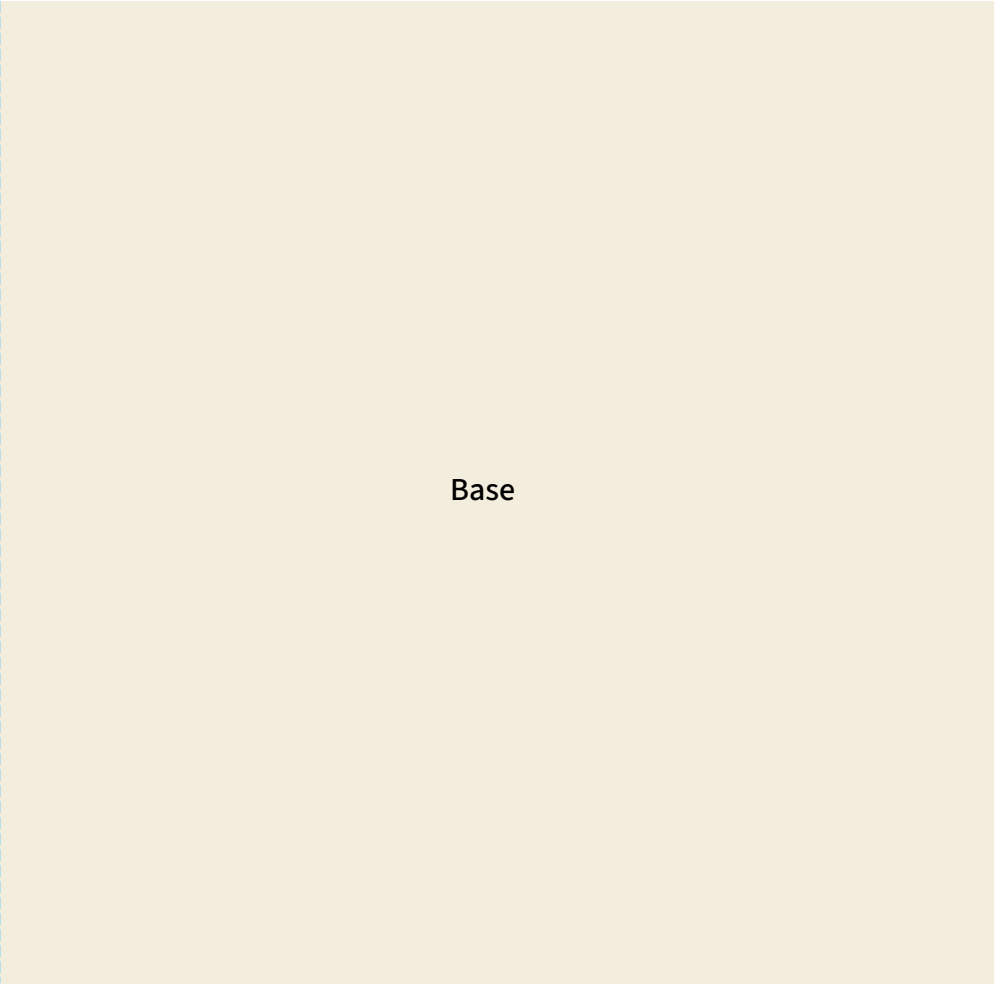
blue flap connects here

yellow flap connects here

green flap connects here

Celebrate our
150th Birthday by
helping me raise \$150.





Base

